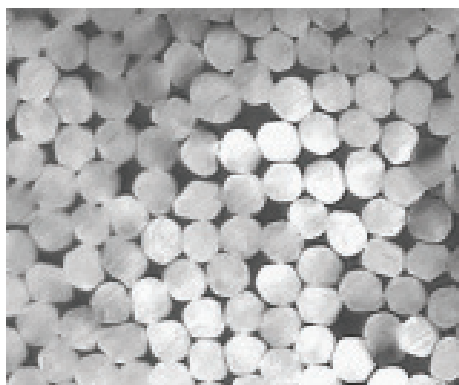


## HYGIENE



### MONO PP Round fibres

**MONO round fibres** made by polypropylene are suitable for all carding processes. With their special formulation our PP-MONO round fibres are trimmed for running on high speed carding lines with calandar bonding and all other consolidation processes like Carded Through Air Bonding, Spunlacing and Needle Punching.



#### Key properties

- good bonding
- improved web uniformity
- higher nonwoven strength

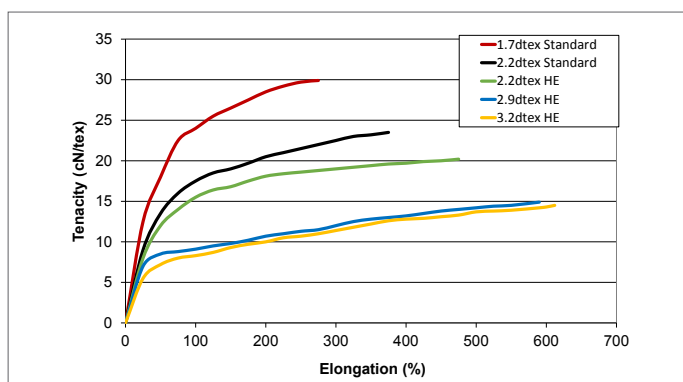
## S 2000

S 2000 is the thermal bonding fibre with high performance in terms of high speed, nonwoven strength, web uniformity and softness. It is available as hydrophilic, hydrophobic type and durable strike through types (Permanent Hydrophilic) for all hygiene applications.

## S 2000 HE (High Elongation)

S 2000 HE is the thermal bonding fibre with high elongation for SEL (Stretch Elastic Laminates) applications, available both as hydrophilic and hydrophobic types. Thermal bonded nonwovens made with this fibre allow higher CD-elongation of the nonwoven by maintaining its structure and textile touch.

### Standard fibres versus HE (High Elongation) fibres



## ULTRASOFT

Ultrasoft types are fibres with excellent softness based on a polyolefin composition specially developed for the thermal bonding sector. The fibres are mainly used for baby diapers, sanitary towels, incontinent products and disposable nonwovens for medical applications. These fibres show very low modulus with high bonding strength combined with a good nonwoven softness.

Beaulieu Fibres International Terni Srl  
P.le Piazzale Donegani 4  
05100 Terni - Italy  
+39 07 443 991  
Info.bfi@bintg.com  
www.beaulieufibres.com

Beaulieu Fibres & Yarns  
China Sales Office  
Rm 1205-1206, Imago Plaza  
99 Wuning Road, Shanghai 200063 - China  
+86 139 6962 3568  
Info.asia@bintg.com

Beaulieu Fibres International N.V.  
US Sales Representative  
+1 678 860 1336  
Info.bfi@bintg.com

## TG SOFT PH/HW

Fibres specially developed for Acquisition Distribution Layers (ADL). The fibre responds to the need for an intermediate layer, in between the nonwoven and the absorbent core, which can temporarily accept the organic liquid before distributing it to the more extend area of the absorbent core. The fibre realizes a proper balance between horizontal and vertical distribution of liquids in the shortest time. A proper blend of titres helps in the liquid management of the nonwoven.

## SL

SL fibres are specially developed for Spunlace technology. This product shows good entangling efficiency and very low foam formation. The product has very low sinking time, good softness. It is suitable for the use in wet wipes, sanitary napkins and other hygiene applications.

### Hygiene Fibres | MONO ROUND

#### Products specifications range

Titre	1,3 - 8,9 dtex
Cut Lengths (mm)	40 - 50 - 60
Cross section shape	Round

#### Finish options

PHIL	Standard Hydrophilic
PH	Permanent Hydrophilic
PH/HW	Permanent Hydrophilic and High Wicking
PHOB	Hydrophobic
PH BOTANICAL	Permanent Hydrophilic with Botanical Essences
SL	Finish suitable for Spunlace technology

#### Additives

Softness
Opacity

#### Melting Temperature

PP (Phthalate-Free)	165°C
---------------------	-------

The presented products portfolio complies with the worldwide safety regulations for hygiene applications and are not containing any hazardous ingredients for safety, according to the European directive 67/548/CEE; EC 1272/2008 (CLP); EC 1907/2006 (REACH). All the mentioned fibres are not cytotoxicity and are not skin irritating and are in compliance with Oeko-Tex Standard 100 Normative, Class I and Class II.